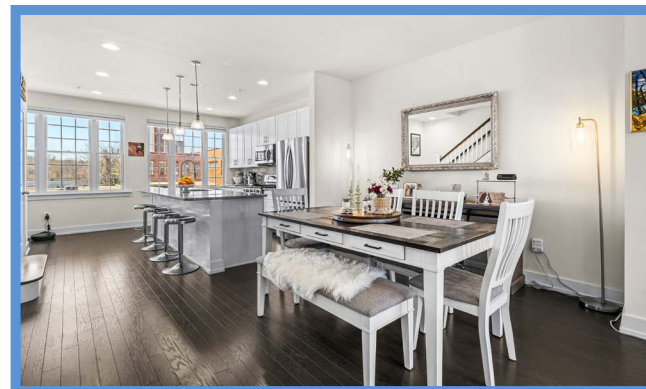
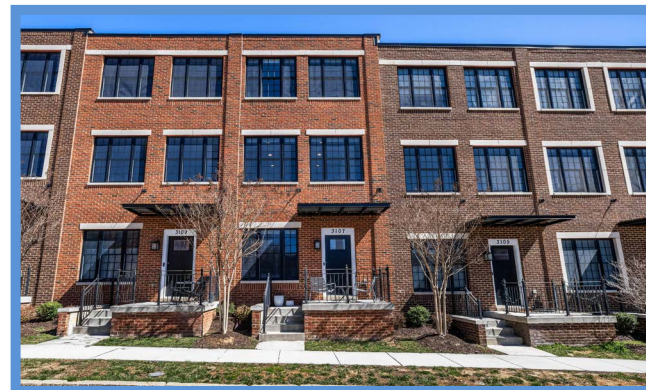
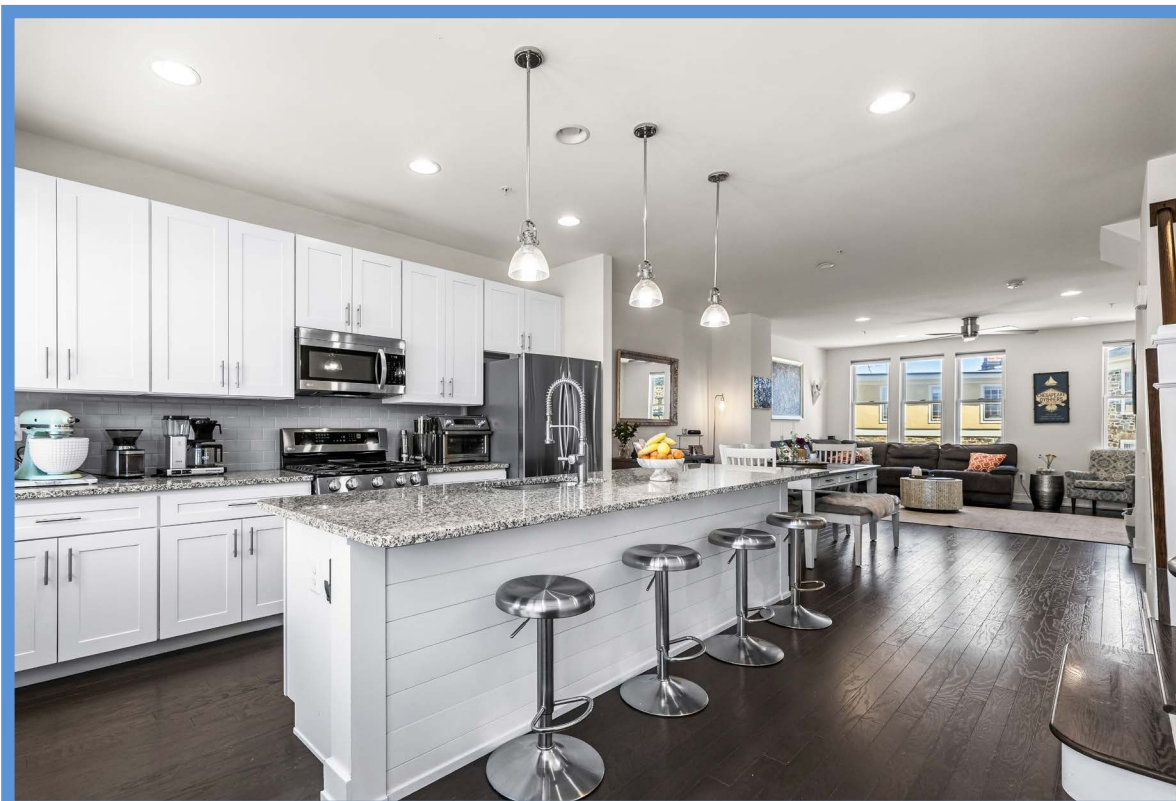


# Hubble Bisbee

## CHRISTIE'S INTERNATIONAL REAL ESTATE



### 3107 ELM AVENUE HAMPDEN

#### LOCATIONS

2330 W Joppa Road, Suite 104  
Lutherville, MD 21093

181 Harry S Truman Pkwy Ste 200  
Annapolis, MD 21401



#### ANDREW FRANK

Director of Operations, Realtor®

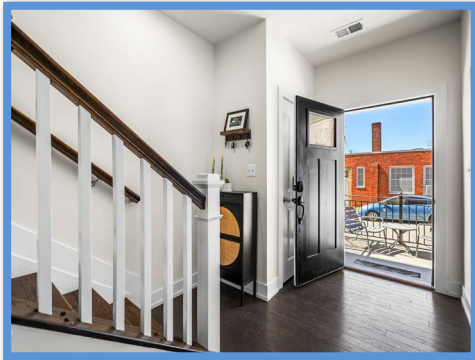
Andrew@HubbleBisbee.com

410-925-1300 (Mobile)

410-321-1411 (Office)

WWW.HUBBLEBISBEE.COM





## GROUND LEVEL

### FOYER

- Paneled entry door with window
- Engineered hardwood flooring
- Open staircase to main level with hardwood handrails
- Coat closet
- Laundry closet with Whirlpool stacked washer and dryer
- Utility closet with Goodman HVAC unit with gas heat and state electric water heater

### BEDROOM 4

- Wall-to-wall carpeting
- Triple window with pleated shade
- Double closet

### HALL BATH

- Stone finish ceramic tile floor and shower stall walls
- Vanity with solid surface top and seamless sink, plate glass mirror and overhead lighting
- Shower stall with ceramic tile floor, recessed light and glass door
- Sterling flush
- Exhaust fan

### GARAGE

- One-car
- Automatic door opener
- Storage area with exit door with window
- Electric service panel
- Charging station negotiable

## MAIN LEVEL

### LIVING ROOM

- Engineered hardwood flooring
- Triple window and additional window with pleated shades
- Recessed lighting
- Ceiling fan with light
- Open flow to Dining Room
- Wall mount TV negotiable, bracket to remain

### DINING ROOM

- Engineered hardwood flooring
- Open staircase to Ground Level
- Flows to Kitchen

## KITCHEN

- Engineered hardwood flooring
- White Shaker style cabinets including island/breakfast bar, 42" wall cabinets, pot-pan drawers, tray cabinet, pull-out trash/recycle bins and dovetailed drawers
- Granite counters
- Subway tile backsplash
- LG stainless steel French door refrigerator
- LG stainless steel gas range with griddle
- LG stainless steel built-in microwave
- Whirlpool stainless steel dishwasher
- Under-counter French door wine cooler
- Oversize stainless steel undermount sink with gooseneck faucet and Insinkerator disposal
- Walk-in pantry closet
- Two triple windows with pleated shades
- Recessed lighting
- Three pendant lights with glass shades above island
- Open staircase to Upper Level

## UPPER LEVEL

### HALL

- Landing for staircase with banister overlook
- Engineered hardwood flooring
- Linen closet
- Recessed lighting

### PRIMARY BEDROOM

- Engineered hardwood flooring
- Bay window with pleated shades
- Two walk-in closets
- Ceiling fan with light
- Wall mount TV negotiable, bracket to remain

### PRIMARY BATH

- Ceramic hex-tile floor and shower pan
- Double vanity with granite top, undermount sinks, plate glass mirror and overhead lighting
- Shower stall with subway tile walls, built-in bench,

- additional handheld shower, recessed light and glass door enclosure
- Sterling flush
- Exhaust fan

### BEDROOM 2

- Wall-to-wall carpeting
- Triple window with pleated shade
- Closet

### BEDROOM 3

- Wall-to-wall carpeting
- Triple window with pleated shade
- Double closet

### HALL BATH

- Stone finish ceramic tile floor and tub surround
- Vanity with solid surface top and seamless sink, plate glass mirror and overhead lighting
- Tub/shower combination with recessed light
- Sterling flush
- Exhaust fan

## EXTERIOR

- All brick townhome with cast stone trim
- Built in 2020
- Covered front porch with steel frame/corrugated steel roof
- Parking pad at garage

*All information contained herein deemed reliable but not guaranteed by the Broker*

